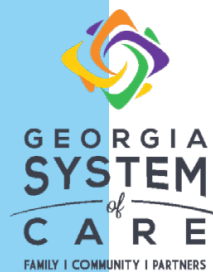




CHILDREN IN NEED OF SERVICES (CHINS) RESOURCE GUIDE

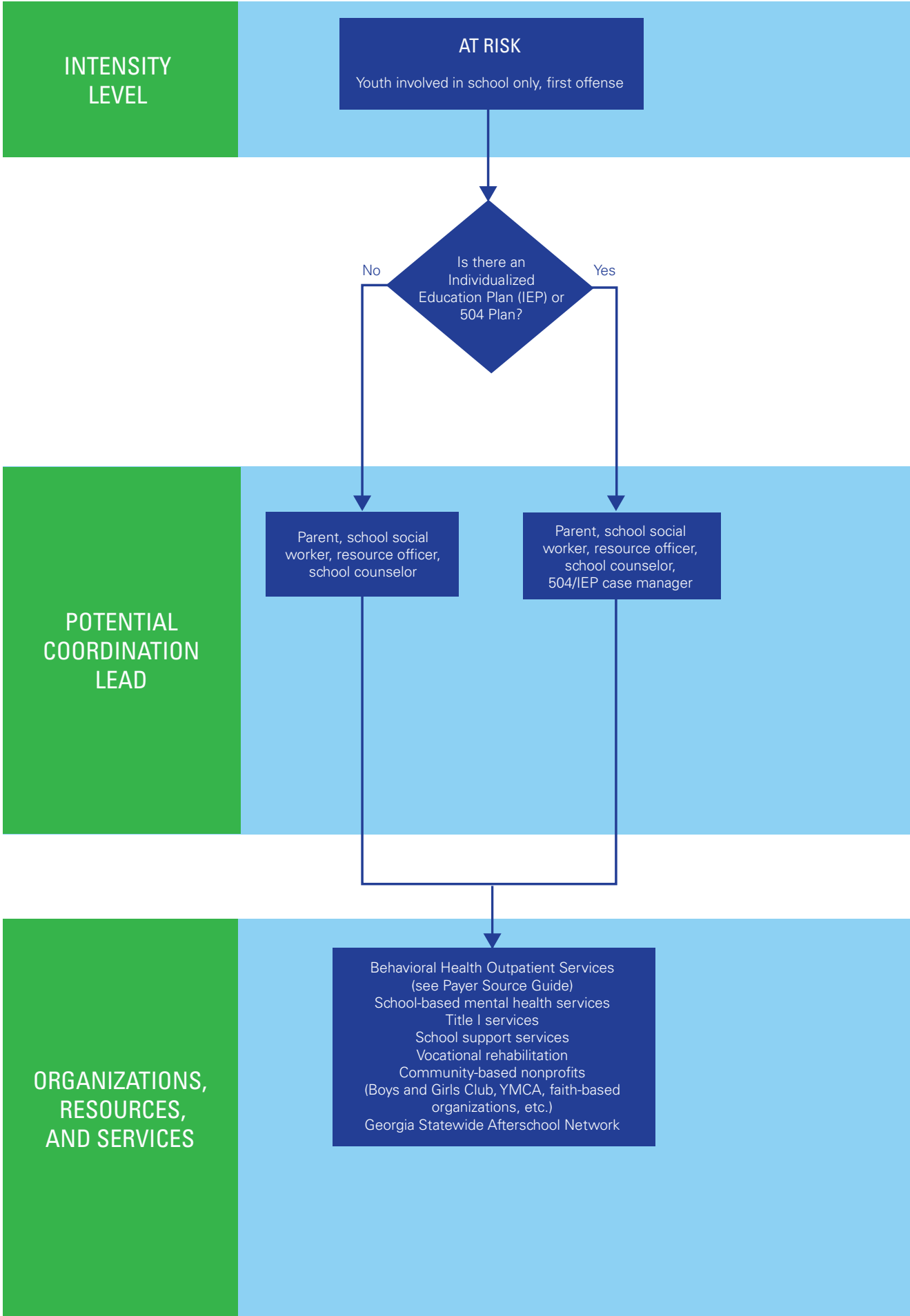


This guide serves as a roadmap to facilitate referrals and service connections for Children in Need of Services (CHINS), as recommended by Georgia's Interagency Directors Team ([IDT](#)). In May 2013, Gov. Nathan Deal signed into law a piece of legislation directed at comprehensive reform of Georgia's juvenile justice code ([HB 242; 2013-2014 Regular Session](#)). A large segment of the new law focuses on the management of CHINS.

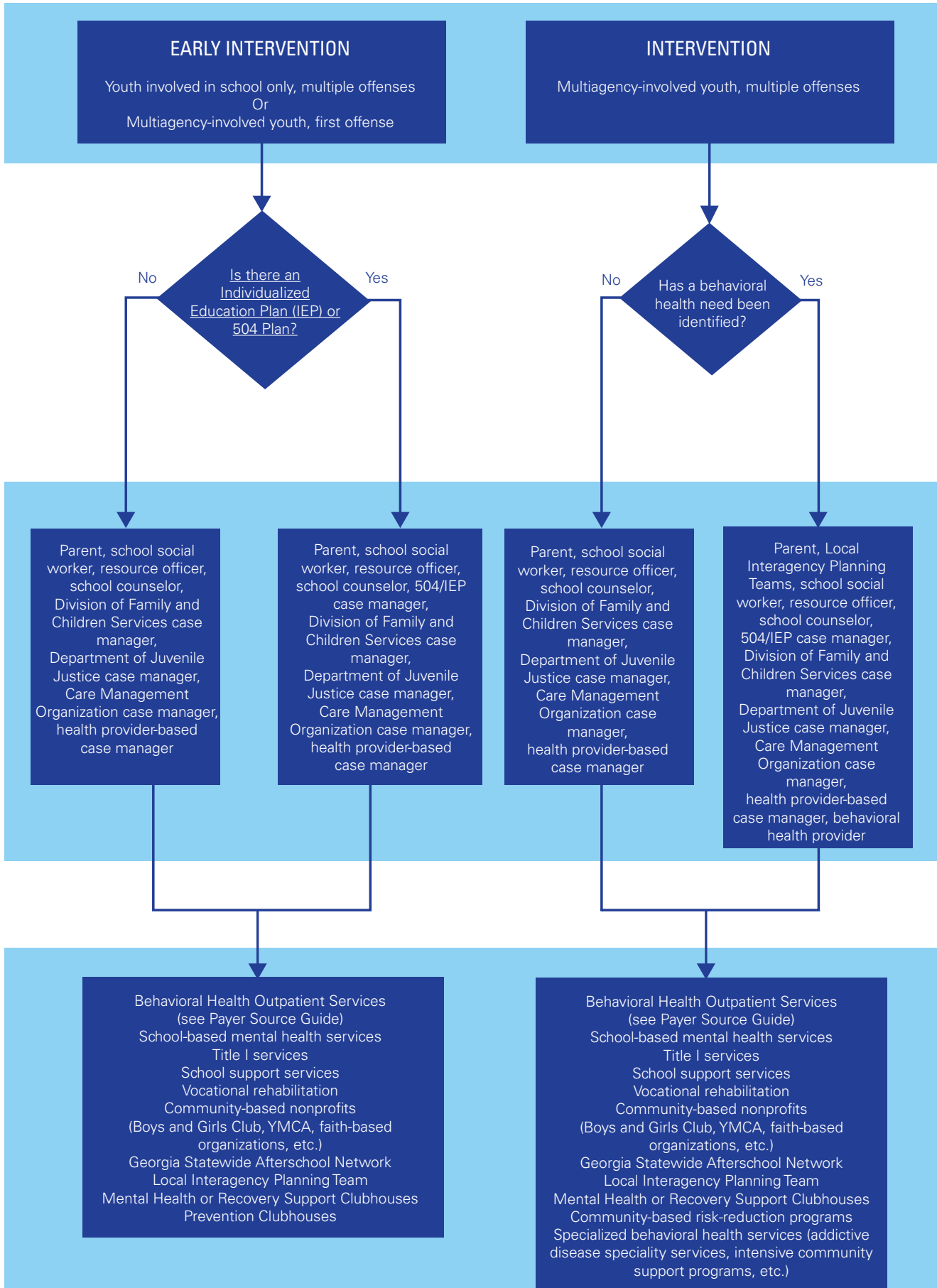
CHINS are defined as minors who have committed status offenses and are in need of guidance, counseling, structure, supervision, treatment, or rehabilitation. CHINS offenses may include habitual truancy, running away, possessing alcohol or being found in a bar, violating curfew hours, or being found ungovernable by parents and putting oneself in danger. Because of the IDT's special understanding of and involvement with System of Care, IDT is uniquely positioned to provide CHINS practice recommendations to courts, law enforcement, schools, and other relevant agencies. This CHINS Resource Guide includes:

1. [Referral Networks](#) — This flowchart represents IDT's preliminary recommendations for the identification, support, and resolution of CHINS. These recommendations can be used as a resource for CHINS coordinators, juvenile court judges and administrators, guardian ad litem, case managers, Local Interagency Planning Teams, community-based risk-reduction programs, school districts, family support organizations, and parents.
2. [Payer Source Guide](#) — This flowchart illustrates the payer sources and behavioral health services available to Georgia children, subject to insurance status. The chart is arranged by insurance coverage status, responsible payer, and services.
3. ["Find a Provider" Search Guide for Families](#) — This flowchart outlines how to find a provider based on the youth's insurance coverage and includes useful tips for searching each payer's "Find a Provider" page, as well as some helpful tips about finding an in-network provider, scheduling appointments, and enrolling in Medicaid benefits.
4. [Preferred Local Contacts](#) — This template allows CHINS coordinators to identify their preferred local referral streams and resources, including contact information.
5. [Glossary](#) — Defines terms used in the charts and throughout the document. If you click on a term in the flowchart, it will bring you to the glossary page and the definition of the term.

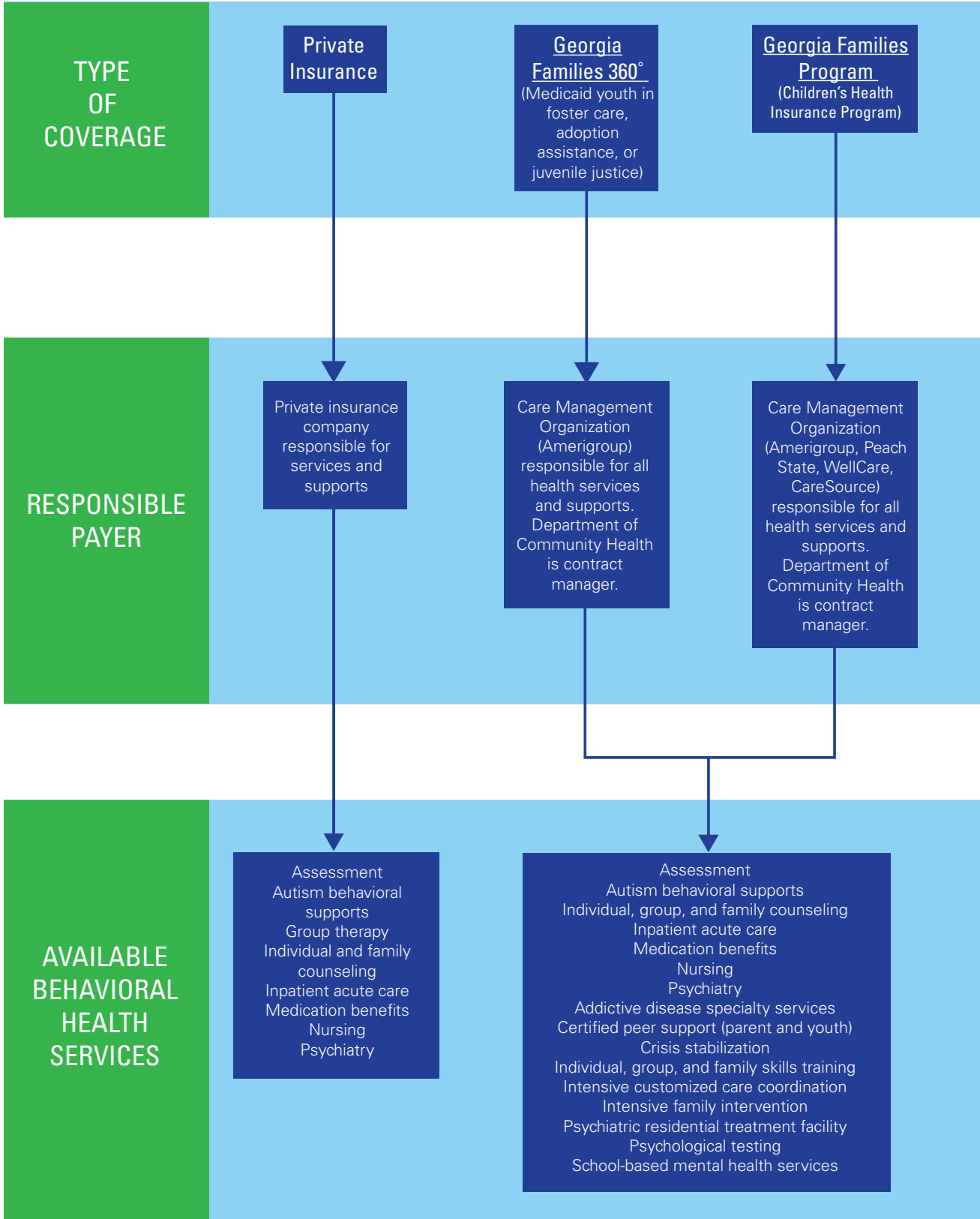
REFERRAL



NETWORKS

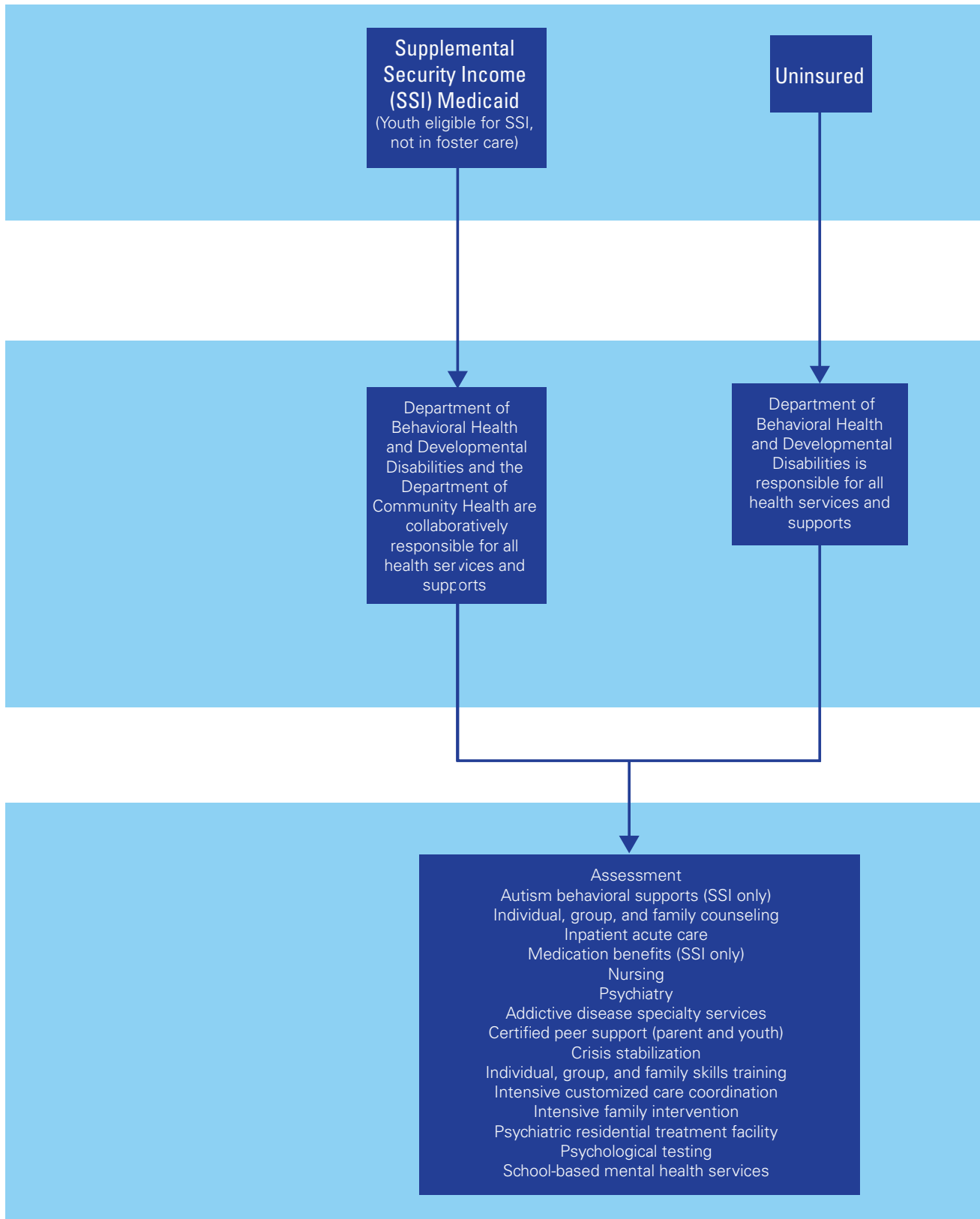


CHILDREN'S



If the family can afford to self-pay, any service

PAYER SOURCE



or support can be obtained with their payment.

"FIND A PROVIDER" SEARCH

Private Insurance

Aetna

Alliant

Ambetter

Blue Cross Blue Shield

Cigna

Coventry Health

Humana

Kaiser Permanente

United Healthcare

Search Tips:

- Registration or sign-up is required on some search pages.
- Information required for most sites includes member name and/or ID number, Social Security number, email or physical address.
- Search functions are sometimes available only to members of the specific plan.
- Where applicable, search for Georgia to find the right network.
- Most pages can be searched by specialty or provider types, including mental health, behavioral health, or substance abuse.
- For immediate or urgent assistance call the Georgia Crisis and Access Line: 1-800-715-4225.

Youth in Foster Care, Adoption Assistance, Juvenile Justice

Georgia Families 360°
(Amerigroup)

- Search by provider specialty or name, or by member address/location
- Under "Select a Product" choose "Georgia Families 360°."
- Under "What type of provider are you looking for?" select "Behavioral Health and Substance Use."

✓ Insurance card ✓ Identif

GUIDE FOR FAMILIES

Georgia Families Care Management Organizations

Amerigroup

- Search by provider specialty or name, or by member address/location.
- Under "Select a Product" choose "Georgia Families 360."
- Under "What type of provider are you looking for?" select "Behavioral Health and Substance Use."

Peach State Health Plan

- Search by location, provider type (behavioral health option on drop down menu), specialty (includes child and adolescent mental health), name, gender, hospital or network affiliation, and accessibility (taking new patients, availability for appointments).
- Under "Network" select "Peach State Medicaid."

WellCare

- Under "What state is your plan in?" select Georgia and under "What is your plan?" choose "Georgia Medicaid."
- Search by address/location, provider name, keyword, or specialty (behavioral health counseling)

CareSource

- Select Georgia - Medicaid and PeachCare for Kids under "Program" and Behavioral Health under "Specialty."
- Page can be searched by location/address and can be filtered by type, accessibility, gender, language, and telemedicine capacity

Supplemental Security Income Medicaid (Medicaid Youth Eligible for SSI, Not in Foster Care)

Georgia Collaborative Administrative Services Organization

- "Find Agencies and Providers" can be searched by member or provider location, program (behavioral health, developmental disability), age, and accessibility.
- Search tips available for help with navigation of search page.

Apply for Medicaid through Georgia Gateway

- Eligibility criteria based on income (247% federal poverty level) and citizenship status (legal citizen or immigration status; parents not required to disclose).
- Verification documents required for registration.

Document Checklist:

Verification or proof of address ✓ Social Security number

Preferred Loc

School

- Counselor
- Social worker
- Resource officer
- IEP/504 lead

Name: _____

Phone Number: _____

Behavioral

- Therapist
- Counselor
- Psychiatrist
- Clubhouse

Name: _____

Phone Number: _____

Community-based

- After school
- Camps
- Clubs

Name: _____

Phone Number: _____

Health

- Case manager
- Family doctor
- Pediatrician
- Primary care provider

Name: _____

Phone Number: _____

Department of Family and Children Services

- Case manager
- Guardian

Name: _____

Phone Number: _____

Department of Juvenile Justice

- Case manager
- Guardian
- Defense counsel

Name: _____

Phone Number: _____

Local Interagency Planning

- Case manager
- LIPT chair

Name: _____

Phone Number: _____

Other Contact

Name: _____

Phone Number: _____

Local Contacts

Pool

mail: _____

address: _____



Health

mail: _____

address: _____



Shared Program

mail: _____

address: _____



Health Care

mail: _____

address: _____



Child Child Services

mail: _____

address: _____



Juvenile Justice

mail: _____

address: _____



Planning Team

mail: _____

address: _____



Contacts

mail: _____

address: _____



GLOSSARY

504 Plan — A 504 plan spells out the modifications and accommodations that will be needed for these students to have an opportunity to perform at the same level as their peers. It may include such things as wheelchair ramps, blood sugar monitoring, an extra set of textbooks, a peanut-free lunch environment, home instruction, or a tape recorder or keyboard for taking notes.

Addictive Disease Specialty Services — Addictive disease services are an array of services for children and adolescents offered by the Georgia Department of Behavioral Health and Developmental Disabilities, including clubhouse recovery support, intensive residential treatment, and core services. Eligibility is determined by age, diagnostic evaluation, and functional/risk assessment.

Case Management — Case management provides coordination of care and services in the community for individuals living with behavioral health concerns. Assistance is provided in an array of service areas, including obtaining housing in some cases, linking the person to rehabilitation services, and enrolling in income programs such as Supplemental Support Income and Social Security Disability Insurance.

Certified Peer Support — Certified Peer Support Parent and Youth (CPS–P and CPS–Y) services are provided by individuals with lived experience of a mental health condition or having a family member with a mental health condition. This support assists others in promoting recovery. The state Medicaid authority, the Department of Community Health, received approval through a Medicaid State Plan Amendment to allow CPS services to be reimbursed by Medicaid, expanding access to these services to those in need and creating opportunities for those in recovery to provide much-needed services throughout the state.

Core Benefit Package — Core services offered for youth and young adults with behavioral health needs include evaluation and assessment, diagnostic assessments, counseling and medication management, therapy (individual, group, and family), community support services, crisis assessments, and physician services.

Crisis Stabilization Unit (CSU) — These small units provide short-term, acute stabilization for individuals experiencing behavioral health crises whose needs cannot be met safely in psychiatric residential treatment facility settings. CSUs may be designed to admit on a voluntary or involuntary basis when the person needs a safe, secure environment that offers psychiatric stabilization and withdrawal management services in a setting that is less restrictive than a hospital.

Georgia Collaborative Administrative Services Organization (ASO) — The ASO is a one-stop shop for the services and providers offered by the Georgia Department of Behavioral Health and Developmental Disabilities. Comprehensive community providers (CCPs) function as the safety net, serving the most vulnerable and responding to critical access needs.

Community Medicaid providers offer behavioral health services and supports identified in the Medicaid State Plan for children and young adults covered by Medicaid. Specialty providers offer an array of specialty services including Intensive Family Intervention, emerging adult support services, school-based mental health services, supported employment, and youth clubhouses.

Department of Behavioral Health and Developmental Disabilities (DBHDD) — DBHDD provides treatment and support services to people with mental health challenges and substance use disorders, and assists individuals who live with intellectual and developmental disabilities. DBHDD supports Georgia's System of Care for uninsured children and young adults, or those with Supplemental Support Income Medicaid, and their families, that are accessing the public behavioral health system. This is accomplished through the development of nontraditional treatment and supports for youth and families that support the traditional array of services available through Medicaid. DBHDD does not provide direct services but works through a tiered provider network. See Georgia Collaborative ASO for additional information.

Georgia Department of Community Health (DCH) — DCH is one of four health agencies serving the state of Georgia. DCH serves as the lead agency for Medicaid and the State Health Benefit Plan. Through effective planning, purchasing, and oversight, DCH provides access to affordable, quality health care, including for some of the state's most vulnerable and underserved populations.

Georgia Crisis and Access Line (GCAL) — GCAL is the 24/7 hotline for accessing mental health services in Georgia and can be reached at 1-800-715-4225 or mygcal.com.

Individualized Education Plan (IEP) — An IEP defines the individualized objectives of a child who has been found with a disability, as defined by federal regulations. The IEP is intended to help children reach educational goals more easily than they would otherwise. In all cases, the IEP must be tailored to the individual student's needs, as identified by the IEP evaluation process, and must especially help teachers and related service providers (such as paraprofessional educators) understand the student's disability and how the disability affects the learning process.

Intensive Customized Care Coordination (IC3) — IC3 is a provider-based High Fidelity Wraparound model composed of a team selected by the family or caregiver to develop a strategy to reach goals. IC3 assists individuals in identifying and gaining access to required services and supports, including medical, social, educational, and developmental, regardless of the funding source for the services sought.

Intensive Family Intervention (IFI) — IFI is a service intended to improve family functioning by clinically stabilizing the living arrangement, promoting reunification, or preventing the utilization of out-of-home therapeutic venues (e.g., psychiatric hospital, therapeutic foster care, psychiatric residential treatment facilities, or therapeutic residential intervention services) for the identified youth. Services are delivered utilizing a team approach and are

provided primarily to youth in their living arrangement and within the family system.

Local Interagency Planning Teams (LIPTs) — LIPTs are composed of legislatively mandated local or county-level child-serving agencies and partner participants that work with families to improve and coordinate services for youth with a mental health diagnosis. The approach, based on the System of Care framework, is child-centered and highlights family strengths and supports by providing needed care and resources in the home and community. LIPTs are spearheaded by a volunteer chairperson and are present in almost every county in Georgia, although some LIPTs serve multiple counties, depending on the size of the community and the geographic availability of needed resources.

Mental Health Clubhouses — This program is for youth 6 to 21 and is designed to provide a comprehensive and unique set of services for children and families coping with the isolation, stigma, and other challenges of mental health disorders. The clubhouse program provides supportive services that include educational supports, employment services, peer support, family engagement, social activities, and other initiatives geared to engage youth and assist them in managing behaviors and symptoms.

Recovery Support Clubhouses — The Recovery Support Clubhouse programs utilize a comprehensive substance abuse recovery support model designed to engage adolescents and their families in their own recovery. The clubhouses are supportive environments where consumers are members. Staff and members work together to perform the jobs of the clubhouse and participate in social outings, educational supports, employment supports, transitional services, and other specific clubhouse activities.

Prevention Clubhouses — This program is designed to provide prevention services to high-risk youth ages 12 to 17 years to address socioeconomic challenges and risk factors they face in their communities at home. Each clubhouse is unique, and participation is limited to youth who are at high risk for alcohol and drug abuse, involved in ongoing detention or alternative school, have parents have current or past addiction or a sibling currently receiving treatment for substance abuse disorder, or experience education or social issues. The clubhouses use peer mentors, evidence-based prevention curriculums, and interactive, engaging youth activities to build coping, decision-making, and life skills. They each include family activities/participation, community service, education and employment services, nutrition, physical activities, and an evidence-based prevention curriculum. The clubhouses provide a safe, comfortable, and exciting place for the youth they serve.

Psychiatric Residential Treatment Facility (PRTF) — A PRTF is any nonhospital facility providing inpatient service benefits to Medicaid-eligible individuals between the ages of 5 and 21.

Psychiatrist — A psychiatrist is a doctor, either a medical doctor or a doctor of osteopathic medicine, that specializes in mental health, including substance use disorders. Psychiatrists assess both the mental and physical aspects of psychological problems.

School-Based Mental Health Services — These services are delivered by school-employed and community-employed providers in school buildings. School-based mental health services are available through the Georgia Apex Program, funded by the Georgia Department of Behavioral Health and Developmental Disabilities, or through the Medicaid Care Management Organization providers.

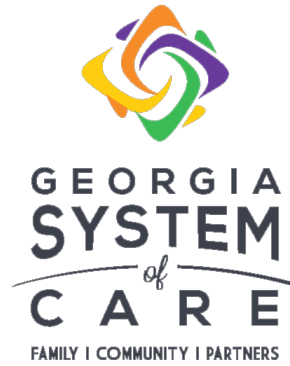
School Support Services — The Division for Special Education Services and Supports includes programs and services that support local school districts in their efforts to provide special education and related services to students with disabilities. These services focus on enhancing student achievement and post-secondary outcomes through implementation of regional and statewide activities for students, families, educators, administrators, and other stakeholders. Targeted areas for services and supports include accessible instructional materials, assistive technology, curriculum access and alignment, dropout prevention, family engagement, least restrictive environment, positive behavior supports, and transition.

Supplemental Security Income (SSI) Medicaid for Youth — Supplemental Security Income (SSI) for children is a federal disability benefit program for blind or disabled youth under 18 years or students under 22 years. Georgia Medicaid helps to cover medical costs for eligible SSI youth. SSI is also available to adults over 18 who meet certain eligibility requirements.

Title I Services — Title I Services provide federal funds through the Georgia Department of Education to local educational agencies and public schools in Georgia with high numbers of children living in poverty. Title I, Part A helps to ensure that all children meet challenging state academic content and student academic achievement standards. Title I, Part A programs must be based on effective means of improving student achievement and include strategies to support parental involvement.

Title IV Services — The Every Student Succeeds Act (ESSA) authorizes significant funds to help increase the capacity of states, local educational agencies, schools, and local communities to provide all students with access to a well-rounded education and to improve school conditions for student learning. These funds can be used to increase access to comprehensive school psychological services, improve school safety and school climate, and strengthen parent and community engagement. Title IV, Part A ESSA funds can be utilized by schools to provide school-based mental health services depending on the district ESSA plan (see School-Based Mental Health Services for more).

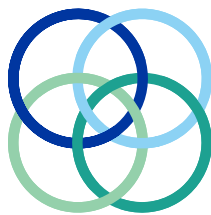
Vocational Rehabilitation — These services assist eligible persons with physical, mental, or emotional disabilities to prepare for a job, get a job, or keep their current job.



THE
CARTER CENTER



Waging Peace. Fighting Disease. Building Hope.



**CENTER OF EXCELLENCE FOR
CHILDREN'S BEHAVIORAL HEALTH**
integrating research, policy, and practice



For more information on the Georgia System of Care, please contact
Center of Excellence for Children's Behavioral Health
Georgia Health Policy Center
Georgia State University
404-413-0314
gacoeonline.gsu.edu
gacoeonline@gsu.edu